



(925) 439-1000

[www.mbpest.com](http://www.mbpest.com)



# Subterranean Termites

In California we often encounter the Western Subterranean Termite. This native pest can enter a structure through cracks less than 1/16" wide, even the minute openings found in concrete slabs, around drain pipes, and between the slab and the foundation.

Subterranean termite colonies are usually located in the ground below the frost line but above the water table and rock formations. They are typically detected by the presence of "mud tubes" they construct or when large numbers of winged termite "swarmers" leave the colony to search out mates. Swarms occur in the daytime - often on a sunny day after a rain storm - during the fall, winter, or early spring.



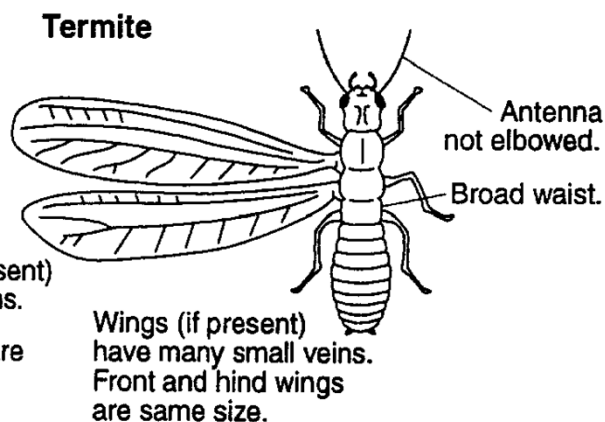
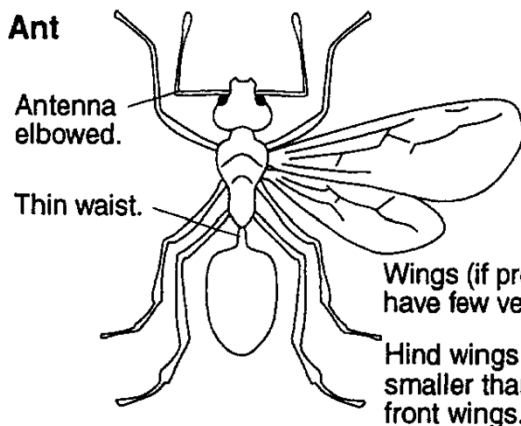
Termite Tube bridging a garage slab expansion joint and entering the wall framing.



Termite swarmers on the wall of a home.

## HOW TO IDENTIFY A TERMITE SWARMER

Both ants and termites have swarmers. They can look very similar - but there are some differences

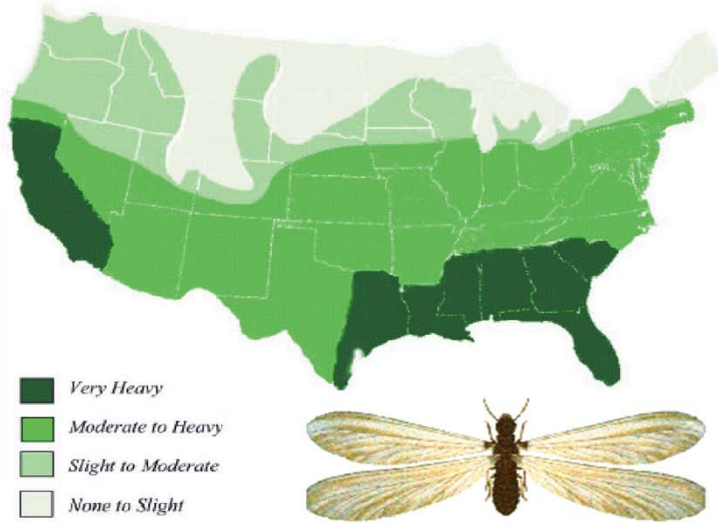


# CALIFORNIA IS TERMITE COUNTRY

As this map illustrates - California is very heavily infested with termites. Our moderate climate provides a desirable environment for these wood destroying pests.

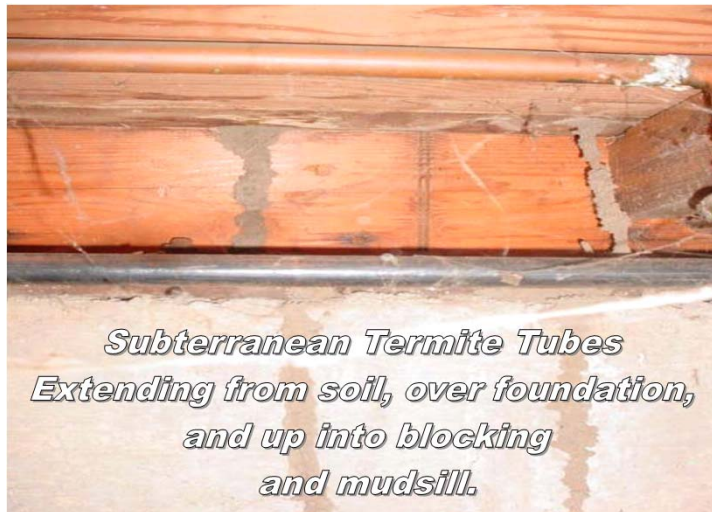


**Subterranean Termite Worker**



Subterranean termites eat wood for food. In nature their job is to turn dead wood into soil. Your home is made from DEAD WOOD! If during their constant random foraging they discover your home it may become their diet - and structural damage can occur if they find your home appetizing.

Subterranean termites live in the ground but commute up to your home for food. Their highway system is the mud-tubes they build. They are hollow in the middle and they travel about the structure using the tubes for protection. Sometimes the first sign of an infestation is the presence of termite tubes.



McCauley Brothers Termite and Pest Services provides termite inspections and control treatments. If your home has termites - we have the equipment and materials to eradicate them from your home. Our commitment is to assist you in protecting one of your most valuable assets - your home. Contact us if you have concerns or questions about termites or any other wood destroying conditions.